

Appendix A-5

Pasco County Mobility 2040 LRTP Board Adoption Report (Excerpts)



# MOBILITY 2040



Pasco County MPO  
Transportation Plan

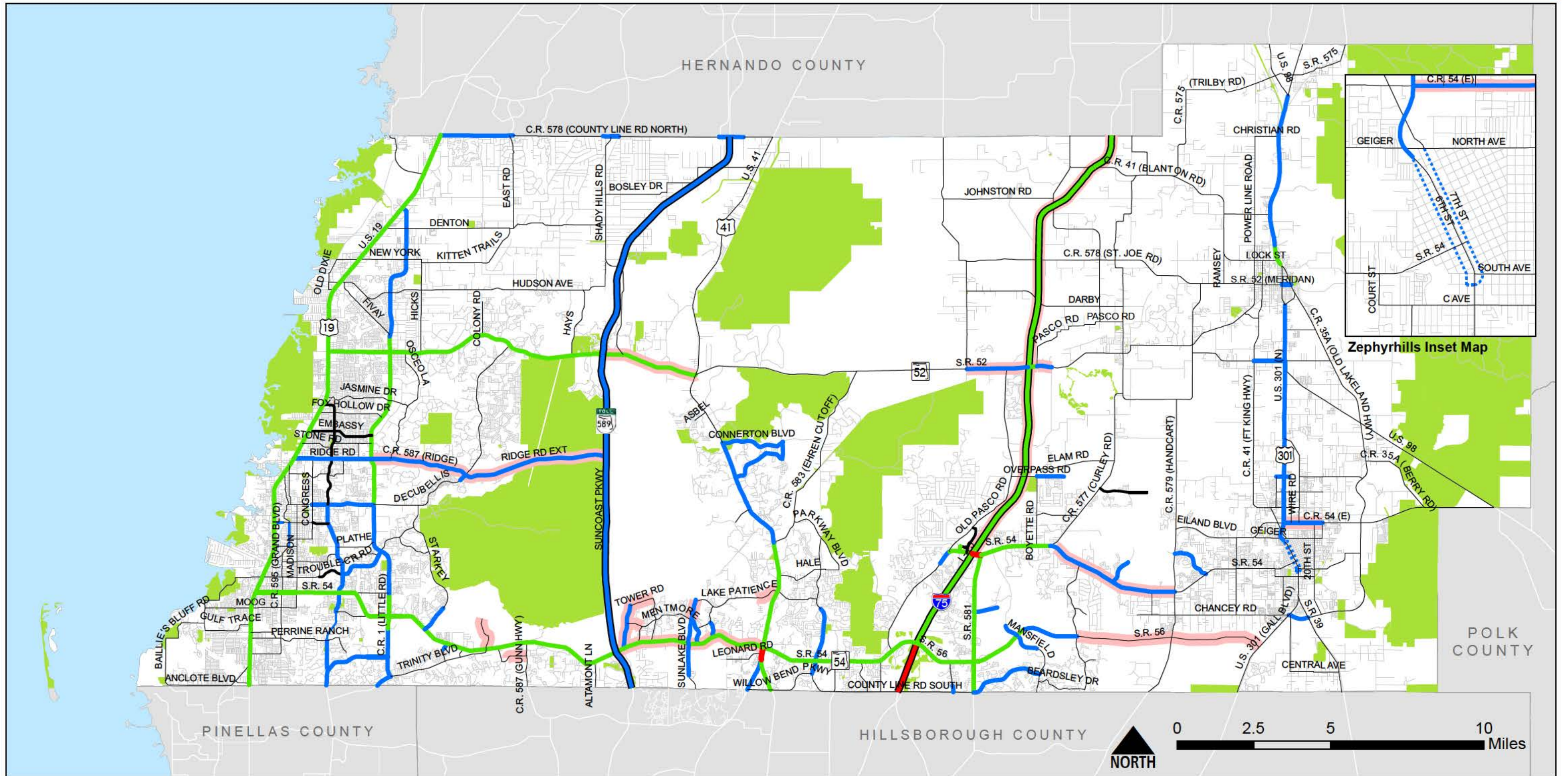
## Pasco County MPO MOBILITY 2040 Long Range Transportation Plan

### Board Adoption Report 2040 Cost Affordable Transportation Plan

# Final Report

December 11, 2014

# Map 2-1: Existing and Committed Roadway Capacity Improvements and Number of Lanes (2014-2019)

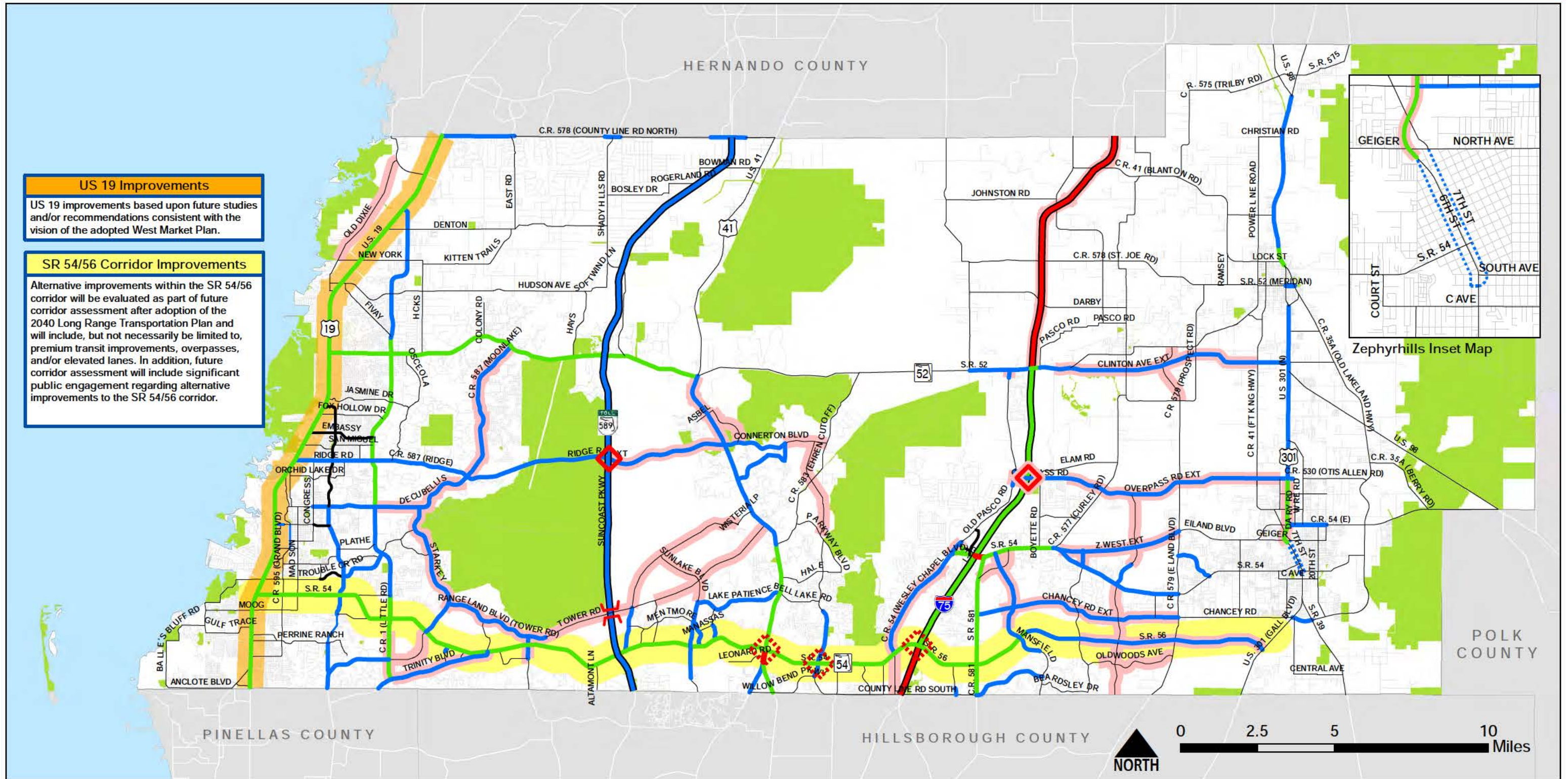


## Legend

- |                        |                   |                 |                        |                                 |
|------------------------|-------------------|-----------------|------------------------|---------------------------------|
| <b>Number of Lanes</b> | 4 Lanes Undivided | 6 Lane Freeway  | 2014-2019 Improvements | Conservation/Parks/Public Lands |
|                        | 2 Lanes Undivided | 4 Lanes Divided | 8 Lanes Divided        |                                 |
|                        | 2 Lanes Divided   | 4 Lane Freeway  | 8 Lane Freeway         |                                 |
|                        | 2 Lanes One way   | 6 Lanes Divided |                        |                                 |



# Map 2-2: 2030 Roadway Improvements and Number of Lanes (2020-2030)



**US 19 Improvements**  
 US 19 improvements based upon future studies and/or recommendations consistent with the vision of the adopted West Market Plan.

**SR 54/56 Corridor Improvements**  
 Alternative improvements within the SR 54/56 corridor will be evaluated as part of future corridor assessment after adoption of the 2040 Long Range Transportation Plan and will include, but not necessarily be limited to, premium transit improvements, overpasses, and/or elevated lanes. In addition, future corridor assessment will include significant public engagement regarding alternative improvements to the SR 54/56 corridor.

- Legend**
- |                 |                   |                        |                                 |
|-----------------|-------------------|------------------------|---------------------------------|
| Number of Lanes | 4 Lanes Undivided | 6 Lane Freeway         | Conservation/Parks/Public Lands |
|                 | 4 Lanes Divided   | 8 Lanes Divided        | US 19 Corridor Improvements     |
|                 | 4 Lane Freeway    | 8 Lane Freeway         | SR 54/56 Corridor Improvements  |
|                 | 2 Lanes One way   | 2020-2030 Improvements |                                 |

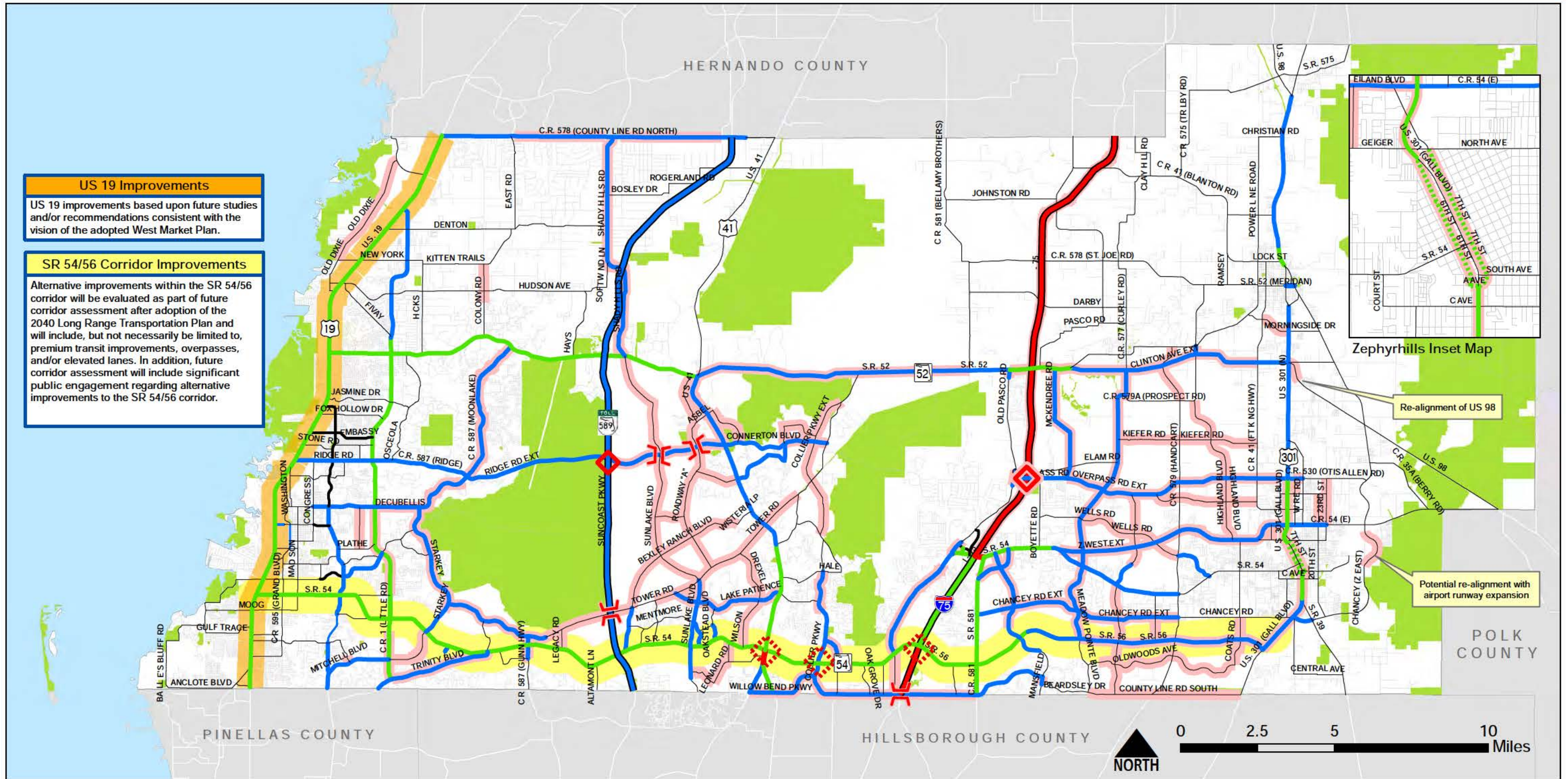
- New Overpass
- New Interchange/ Interchange Modification
- Partially funded Interchange (See table 2-1 for details)

**Notes:**

- Refer to Cost Affordable Plan table for details on phasing.
- Map reflects projects constructed by 2030.
- All alignments are conceptual.



# Map 2-3: 2040 Roadway Capacity Improvements and Number of Lanes (2020-2040)



**US 19 Improvements**  
 US 19 improvements based upon future studies and/or recommendations consistent with the vision of the adopted West Market Plan.

**SR 54/56 Corridor Improvements**  
 Alternative improvements within the SR 54/56 corridor will be evaluated as part of future corridor assessment after adoption of the 2040 Long Range Transportation Plan and will include, but not necessarily be limited to, premium transit improvements, overpasses, and/or elevated lanes. In addition, future corridor assessment will include significant public engagement regarding alternative improvements to the SR 54/56 corridor.

Zephyrhills Inset Map

Re-alignment of US 98

Potential re-alignment with airport runway expansion

**Legend**

- |                 |                   |                        |                                 |
|-----------------|-------------------|------------------------|---------------------------------|
| Number of Lanes | 4 Lanes Undivided | 6 Lane Freeway         | Conservation/Parks/Public Lands |
|                 | 4 Lanes Divided   | 8 Lanes Divided        | US 19 Corridor Improvements     |
|                 | 4 Lane Freeway    | 8 Lane Freeway         | SR 54/56 Corridor Improvements  |
|                 | 2 Lanes Divided   | 2020-2040 Improvements |                                 |
|                 | 3 Lanes One way   |                        |                                 |
|                 | 6 Lanes Divided   |                        |                                 |

- New Overpass
- New Interchange/ Interchange Modification
- Partially funded Interchange (See table 2-1 for details)

- Notes:**
- Refer to Cost Affordable Plan (Table 2-1) for details on phasing.
  - Map reflects projects constructed by 2040.
  - All alignments are conceptual.
  - Any additional lanes for express toll lane corridors are in addition to the mapped number of lanes.

